



AUSTRALIA'S ONLY
INTEGRATED MINING
AND ENERGY
INVESTMENT FORUM

THE MINING 2010 RESOURCES CONVENTION

27 - 29 OCTOBER, 2010
HILTON BRISBANE - AUSTRALIA



BRISBANE . . . THE TRADITION CONTINUES


VERTICALEVENTS

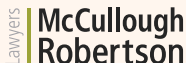
GOLD SPONSORS



www.snowdengroup.com



SILVER SPONSORS



PROGRAMME SPONSOR



MEDIA SPONSOR



BRISBANE . . . THE TRADITION CONTINUES

COMPANY SPONSORS



MANHATTAN
MANHATTAN CORPORATION LIMITED



PANAUST



MINERALS LTD



Southern Uranium Limited



IN ASSOCIATION WITH



LimeStreet
Capital



STOCKRESOURCE



QUEENSLAND
resources
COUNCIL

Professional
Public Relations



Resource Information Unit

PRESENTED BY



For preferential people

M MINING
2010

- 8.40am **Welcome Address** Stewart McDonald - Managing Director **Vertical Events**
- 8.45am **Queensland Government Address** Stephen Robertson MP - Minister for Natural Resources, Mines and Energy and Minister for Trade
- 9.00am **Market Update** Dominic Kazlauskas - Director, Corporate Finance
Patersons Securities Ltd
- 9.20am **The Global Economy and Outlook for Commodity Prices** Huw McKay - Director and Senior International Economist **Westpac Economics**
- 9.40am **Commodity Markets 2011-2015 - Just Volatile or Effervescent?** Allan Trench - Regional Director **CRU Strategies Australasia**
- 10.00am **Building Momentum in the Emerging Economies** Stephen Bartrop - Managing Director **LimeStreet Capital**
- 10.20am **MORNING TEA**
- 11.00am **Queensland's Exploration Initiatives** Dave Mason - General Manager
Geological Survey of Queensland, DEEDI
- 11.15am **Future Directions of Energy Exploration in Queensland** Peter Green - Manager, Energy Geoscience **Geological Survey of Queensland, DEEDI**
- 11.30am **Australia's Onshore Energy Security Program: What Have We Learnt?**
Dr James Johnson - Chief of Division and Deputy CEO **Geoscience Australia**
- 11.55am **Mapping through Cover with Regional AEM Surveys** Dr Nick Williams - Manager, Geophysical Projects **Geoscience Australia**
- 12.15pm **Ivanhoe Australia Ltd** Peter Reeve - Managing Director and CEO
- 12.35pm **LUNCH**
- 1.40pm **Krucible Metals Ltd** Tony Alston - Managing Director
- 2.00pm **Conquest Mining Ltd** John McKinstry - General Manager, Operations
- 2.20pm **Deep Yellow Ltd** Patrick Mutz - Managing Director
- 2.40pm **Dragon Mining Ltd** Peter George Cordin - Executive Chairman
- 3.00pm **AFTERNOON TEA**
- 3.40pm **Navigator Resources Ltd** David Hatch - Managing Director
- 4.00pm **Rex Minerals Ltd** Steven Olsen - Managing Director
- 4.20pm **Mincor Resources NL** Stephen Cowle - Chief Operating Officer
- 4.40pm **Galilee Energy Ltd** Glenn Haworth - Chief Executive Officer
- 5.00pm **Cape Lambert Resources Ltd** Tony Sage - Executive Chairman
- 5.20pm **Conference Drinks in the Exhibition Area - Sponsored by Tetra Tech Australia**
- 6.30pm **Patersons Cocktail Function at the Jade Buddha Shadow Lounge**

11.35am

Dynasty Metals Australia Ltd Malcolm Carson - Executive Director, Technical

11.55am

Corvette Resources Ltd Jason Bontempo - Managing Director

12.15pm

Base Resources Ltd Tim Carstens - Managing Director

12.35pm

LUNCH

1.40pm

Association of Independent Retirees (A.I.R.) Ltd

Helen Sava - Queensland Division Director

2.00pm

Cloncurry Metals Ltd Simon Finnis - Managing Director

2.20pm

Auzex Resources Ltd John Lawton - Managing Director

2.40pm

Sirius Resources NL Dr Mark Bennett - Managing Director

3.00pm

AFTERNOON TEA

3.40pm

D'Aguilar Gold Ltd Nicholas Mather - Managing Director

4.00pm

Impact Minerals Ltd Dr Michael Jones - Managing Director

4.20pm

Breakaway Resources Ltd David Hutton - Managing Director

4.40pm

Altona Mining Ltd Alistair Cowden - Managing Director

5.00pm

Diatreme Resources Ltd Anthony Fawdon - Chairman and CEO

5.20pm

Conference Drinks in the Exhibition Area - Sponsored by Tetra Tech Australia

6.30pm

Patersons Cocktail Function at the Jade Buddha Shadow Lounge



- 8.45am **National Stock Exchange of Australia** Michael Cox - Chairman and CEO
- 9.05am **Bass Metals Ltd** Michael Rosenstreich - Managing Director
- 9.25am **New Information, New Opportunities** Dr Geoff Green - Managing Geologist **Mineral Resources Tasmania**
- 9.35am **New Data, New Potential** Cameron Ricketts - Manager, Minerals and Land Use Assessment **Geological Survey of NSW**
- 9.45am **Australian Bauxite Ltd** Ian Levy - Chief Executive Officer
- 10.05am **Tanami Gold NL** Graeme Sloan - Managing Director / CEO
- 10.25am **MORNING TEA**
- 10.55am **Centaurus Metals Ltd** Darren Gordon - Managing Director
- 11.15am **Ironclad Mining Ltd** Ian Finch - Managing Director
- 11.35am **South Australia's New PACE 2020 Initiative** Dr Ted Tyne - Director, Minerals Resources Group, Primary Industries and Resources SA
Government of South Australia
- 11.45am **New Base Metal and Gold Exploration Districts in WA** Don Flint - Acting Assistant Director Resources **Geological Survey of Western Australia**
- 11:55am **Troy Resources NL** Paul Benson - Chief Executive Officer
- 12:15pm **Southern Uranium Ltd** John Anderson - Managing Director
- 12.35pm **LUNCH**
- 1.35pm **Bendigo Mining Ltd** Rod Hanson - Managing Director and CEO
- 1.55pm **Discovery Opportunities in Victoria - 3 & 4D Solutions** Paul McDonald - Acting Director **GeoScience Victoria**
- 2.05pm **Newly Identified Base Metals, Gold and Uranium Mineral Systems and Exploration Opportunities in the Northern Territory** Ian Scrimgeour - Director **Northern Territory Geological Survey**
- 2:15pm **Emmerson Resources Ltd** Rob Bills - Managing Director and CEO
- 2.35pm **Azumah Resources Ltd** Stephen Stone - Managing Director
- 2.55pm **Image Resources NL** George Sakalidis - Managing Director
- 3.15pm **AFTERNOON TEA**
- 3.50pm **Venture Minerals Ltd** Hamish Halliday - Managing Director
- 4.10pm **Zamia Metals Ltd** Dr Kenneth Maiden - Executive Chairman
- 4.30pm **Mungana Goldmines Ltd** Pat Scott - Managing Director
- 4.50pm **Exco Resources Ltd** Michael Anderson - Managing Director
- 5.10pm **Integra Mining Ltd** Christopher Cairns - Managing Director
- 5.30pm **Integra Mining and hrTesting Cocktail Function held in the Exhibition Area**

- 8.45am **Superior Resources Ltd** Ken Harvey - Managing Director
- 9.05am **Chesser Resources Ltd** Dr Rick Valenta - Managing Director
- 9.25am **MM Mining Ltd** Hamish Collins - Managing Director
- 9.45am **Southern Cross Goldfields Ltd** Glenn Jardine - Managing Director
- 10.05am **Coppermoly Ltd** Denis O'Neill - Chief Consulting Geologist
- 10.25am **MORNING TEA**
- 10.55am **Pioneer Resources Ltd** David Crook - Managing Director
- 11.15am **Australian-American Mining Corporation Ltd** Jim Malone - Executive Chairman
- 11.35am **Southern Gold Ltd** Nanette Anderson - Managing Director
- 11.55am **MetroCoal Ltd** Mike O'Brien - Chief Executive Officer
- 12:15pm **PepinNini Minerals Ltd** Norman Kennedy - Managing Director
- 12.35pm **LUNCH**
- 1.35pm **Laramide Resources Ltd** Robert Sowerby - Project Manager
- 1:55pm **Minotaur Exploration Ltd** Dr Tony Belperio - Exploration Director
- 2:15pm **Aviva Corporation Ltd** Lindsay Reed - Chief Executive Officer
- 2:35pm **Syndicated Metals Ltd** Russell Davis - Managing Director
- 2:55pm **Drake Resources Ltd** Dr Bob Beeson - Managing Director
- 3:15pm **AFTERNOON TEA**
- 3.50pm **Kentor Gold Ltd** Simon Milroy - Managing Director
- 4.10pm **Alcyone Resources Ltd** Andrew King - Managing Director
- 4.30pm **Richmond Mining Ltd** Howard Dawson - Chairman
- 4.50pm **Renaissance Minerals Ltd** Justin Tremain - Managing Director
- 5.10pm **Fe Ltd** Mark Gwynne - Executive Officer
- 5.30pm **Integra Mining and hrltesting Cocktail Function held in the Exhibition Area**



- 8.50am **Meridian Minerals Ltd** Jeremy Read - Managing Director
- 9.10am **Ramelius Resources Ltd** Ian Gordon - Chief Executive Officer
- 9.30am **Encounter Resources Ltd** Will Robinson - Managing Director
- 9.50am **PanAust Ltd** Dr Fred Hess - Executive General Manager, Southeast Asia
- 10.10am **Reed Resources Ltd** Chris Reed - Chief Executive Officer
- 10.30am **MORNING TEA**
- 11.00am **Catalpa Resources Ltd** Stuart Pether - Chief Operating Officer
- 11.20am **Kagara Ltd** Kim Robinson - Executive Chairman
- 11.40am **Hazelwood Resources Ltd** Terry Butler-Blaxell - Managing Director
- 12.00pm **Cauldron Energy Ltd** Terry Topping - Managing Director
- 12.20pm **Metallica Minerals Ltd** Andrew Gillies - Managing Director and CEO
- 12.40pm **LUNCH**
- 1.30pm **Carpentaria Exploration Ltd** Nick Sheard - Executive Chairman / CEO
- 1.50pm **Manhattan Corporation Ltd** Alan J. Eggers - Executive Chairman
- 2.10pm **Western Areas NL** Charles Wilkinson - General Manager of Exploration
- 2.30pm **The Coming Mining Boom** James Dines - Editor *The Dines Letter*
- 3.00pm **Conference Close**

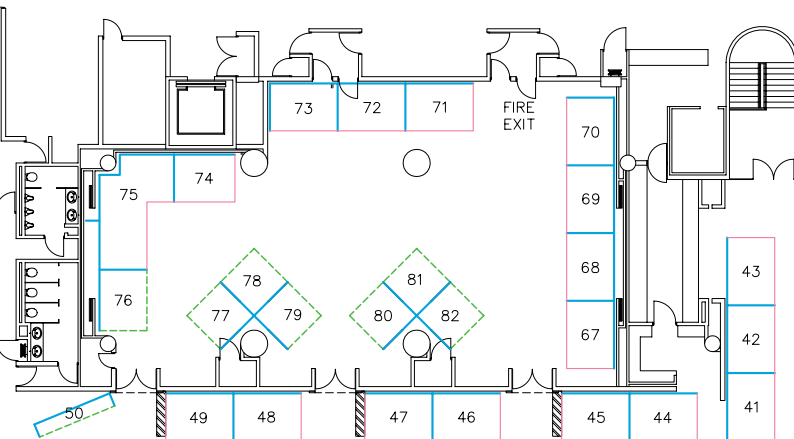




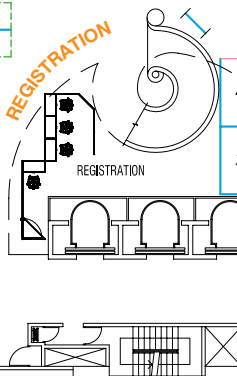
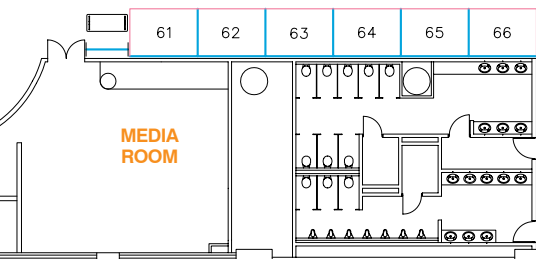
Project Evaluation

- 8.50am **General Overview of Project Evaluation** Andrew Newell - Principal Process Consultant *Pincock Allen and Holt Australia*
- 9.10am **VALMIN Code and What it Means** Jeames McKibben - General Manager, Corporate Services *Xstract Mining Consultants*
- 9.30am **The JORC Code - An Update** Alice Clark - Consultant and Owner, *CdeK Geological & Mining Services*; Elect President, *AusIMM*; Deputy Chairman, *Joint Ore Reserves Committee (JORC)*
- 9.50am **Application of Mining Studies in Project Evaluation** Peter Myers - Group General Manager, Mining and Principal Consultant *Snowden Mining Consultants*
- 10.10am **Question Forum**
- 10.30am **MORNING TEA**
- 11.00am **Overview of Project Evaluation Methodologies** Manish Garg - Principal Consultant Corporate Services *Xstract Mining Consultants*
- 11.20am **Integrating Project Evaluation** Andrew Price - Director, Peter Dunn - Partner *PricewaterhouseCoopers*
- 11.40am **Project Evaluation from a Bankers Perspective** Peter Williams - Managing Director, Natural Resources *National Australia Bank*
- 12.00pm **What are Lawyers Concerns in Evaluating Projects with Case Studies** Scott Standen - Partner *Hynes Lawyers*
- 12.20pm **Question Forum**
- 12.40pm **LUNCH**

BRISBANE . . . THE TRADITION

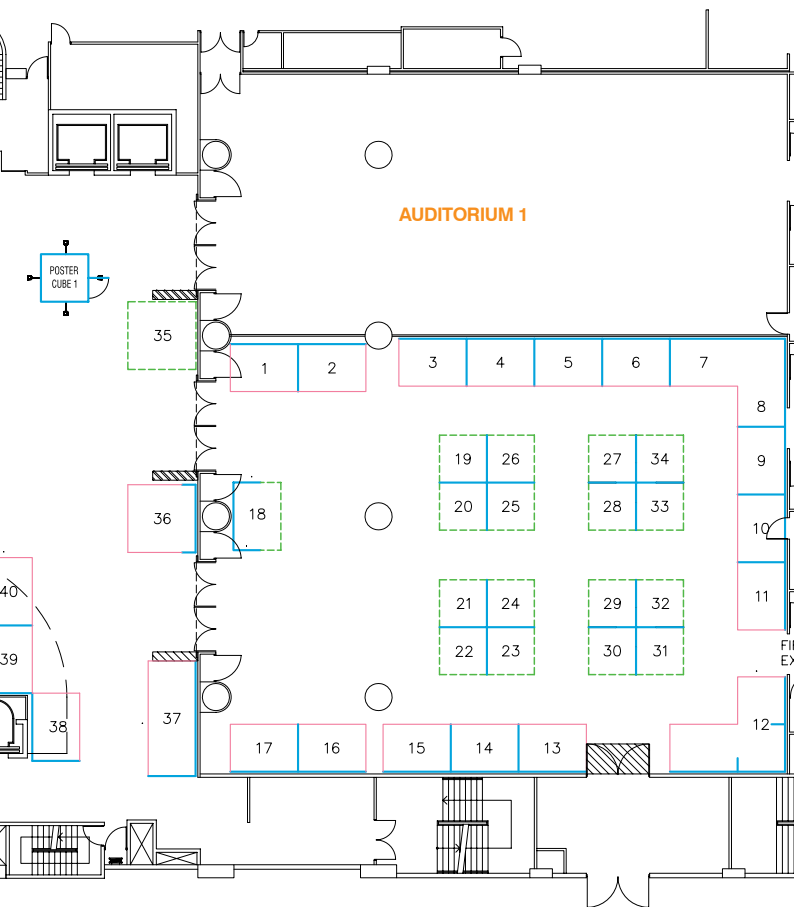


◀ AUDITORIUM 2



CONTINUES

M MINING 2010



Notes

A series of horizontal dotted lines for taking notes, starting from the first line below the 'Notes' header and extending down the page.



**AUSTRALIA'S ONLY
INTEGRATED MINING
AND ENERGY
INVESTMENT FORUM**



MINING 2000 PTY LTD ABN: 86 083 623 358

PO Box 1153 Subiaco WA 6904 - Suite 15, 186 Hay Street, Subiaco WA 6008

T: (08) 9388 2222 F: (08) 9381 9222 E: info@verticalevents.com.au W: www.verticalevents.com.au