



AUSTRALIA'S ONLY  
INTEGRATED MINING  
AND ENERGY  
INVESTMENT FORUM

# THE MINING 2009 RESOURCES CONVENTION

28 - 30 OCTOBER, 2009  
HILTON BRISBANE - AUSTRALIA

**BRISBANE**

... THE TRADITION CONTINUES



  
VERTICALEVENTS



## *Invitation to attend*

It is with pleasure that we present the program for the Mining 2009 Resources Convention to be held at the Hilton Brisbane Hotel on 28 to 30 October 2009.

Queensland is the place to be right now for explorers, with new discoveries and competition for new and existing mineral and energy resources.

There have been numerous announcements about mineral exploration and development activity, and significant developments in the coal seam gas sector and the new LNG proposals. The Queensland Government's Smart Exploration and Smart Mining Future Prosperity data acquisition programs are paying dividends with a surge in exploration activity in key regions of the State.

In July 2005 in the North-West Queensland Mineral Province (Mount Isa region), there were 411 granted EPMs covering 49,000 square kilometres and 214 EPM applications covering 39,000 square kilometres. By June 2009, following the release of Smart Exploration and Smart Mining geophysical data, many research projects, the positive impacts of the Collaborative Drilling, Cluster Formation and Industry Network Initiatives, plus the strategy of creating and repealing Restricted Areas, there has been an enormous surge in exploration activity in the area, with 657 granted EPMs covering 95,300 square kilometres and 507 EPM applications covering 84,000 square kilometres.

This is an increase in area of granted EPMs of 168% in just under four years. The area covered by applications for EPMs also increased over the four year period by 105%. The Mount Isa region still has the attention of the global exploration industry and deservedly so.

The area is hot, especially with the recent announcement of the discovery of the world's highest grade molybdenum and rhenium resource by Ivanhoe. There have also been a number of other discoveries where the mineralisation is still outcropping including copper bearing gossans amongst the sand dunes west of Boulia by Krucible, and iron oxide copper gold resources by Ivanhoe and others.

This has been supported by other exploration announcements for copper, gold, lead, zinc and other minerals and of course the recent mini boom in phosphate exploration and definition of resources.

The discovery of the new untested Millungera Basin by the collaborative deep seismic program run by the Geological Survey of Queensland and Geoscience Australia must also get significant recognition. It is

believed to have potential for geothermal energy resources and possibly other mineral and energy resources. It is very rare to find a new unknown basin of this size anywhere in the world. The overall size, shape, and depth of the basin, and age of sediments within it are still unknown.

These new discoveries in outcrop and at depth show that the Mount Isa region should still be regarded as very under explored and we believe that there will be many more pleasant surprises to come.

Elsewhere in Queensland, Conquest's Mount Carlton project is shaping as a significant gold, silver and copper resource, and there have been upgrades in resources by Copper Strike, and Kagara to just mention a few.

A similar story could be presented for the increased activity for coal seam gas, coal and oil and gas in the Bowen, Surat and the Galilee Basins. The coal and coal seam gas industries are still going very well and exploration and resource definition activity has ramped up significantly with several proposals on the drawing board for LNG production facilities. A number of the big international players in the LNG industry are now planting their roots in Queensland.

### **Investment Focus**

Every conference is different and Brisbane is no exception. We cover mining and energy companies, issues relating specifically to Queensland and most importantly investment.

We are working hard to provide the conference with a series of high net worth individuals for the purpose of investing in the resources industry and will be transporting investors to the event from the Gold Coast and Sunshine Coast as well as working with investment groups within Brisbane.

The Mining 2009 Resources Convention is a vital part of the Australian Resources Calendar and is relevant, focused and most of all enjoyable!

We look forward to seeing you there.

Yours sincerely

**Stewart McDonald**  
Managing Director - Vertical Events

GOLD SPONSORS



SILVER SPONSORS



COMPANY SPONSORS



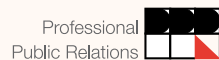
MEDIA SPONSOR



PRESENTED BY



IN ASSOCIATION WITH



## REGISTRATION INFORMATION

To register for Mining 2009, please complete the registration form at the back of this brochure. Alternatively you can download the registration form at [www.verticalevents.com.au/mining2009](http://www.verticalevents.com.au/mining2009).

Delegates are encouraged to register early and take advantage of the early bird rate.

**Early Bird registration closes on Friday 4 September 2009.**

### Full Delegate

Early Bird Delegate	\$990 (incl GST)
Standard Delegate	\$1,100 (incl GST)

### Registration Inclusions - Full Delegate

- Attendance at all conference sessions
- Entry to the exhibition area
- Refreshment breaks
- Entry to the Snowden Welcome Reception on Tuesday 27 October
- Entry to the Patersons Securities Cocktail Function on Wednesday 28 October
- Entry to the Mining 2009 Cocktail Function on Thursday 29 October
- Conference program
- Access to the online presentations made available to full delegates at the conclusion of the conference
- Conference satchel \*\*

\*\* Registrations received after 9 October may receive satchels that vary from the official conference satchel.

### Registration Payment

- Registration forms must be accompanied by payment of the registration
- Registration fees can be paid by Visa, Mastercard, American Express and Diners – you will see “Vertical Events” on your credit card statement. A 4% surcharge will be added to ALL American Express and Diners Charges
- Please make cheques payable to Vertical Events
- Each delegate will receive a confirmation letter and tax invoice

### Cancellation

- All cancellations of attendance must be made in writing to Vertical Events
- A full refund, less an administration fee will be made on those cancellations received before 9 October, 2009.
- No refunds will be made after 9 October 2009.
- All refunds will be paid after the conclusion of the conference



## VENUE

### Hilton Brisbane Hotel

190 Elizabeth Street  
Brisbane QLD 4001  
Telephone: 07 3234 2000



## ACCOMMODATION

### Hilton Brisbane Hotel

*King Deluxe Room*  
\$250.00 per night room only

Wake up to this modern room with a city view, seating area and high-speed internet access. The bright and airy room, with large windows, has 1 king bed. Work in comfort at the large desk with ergonomic chair, stretch out on the sofa, de-stress with the Sony PlayStation or re-energize in the marble bathroom. Special touches include fluffy bathrobe and slippers. Sleeps 2 adults.

*King Executive Plus Room*  
\$350 per night including Executive Lounge Access

Work is easy in this bright and airy room offering city views and Executive Lounge access with free breakfast and refreshments. Catch up on work at the desk with ergonomic chair or surf the web with high-speed internet access. Relax in the separate seating area and curl up in the large armchair with ottoman to watch an on demand movie. Special touches include fluffy bathrobe and slippers. The room has a king bed and sleeps 2 adults.

**To book accommodation at the Hilton, please visit the Vertical Events website [www.verticalevents.com.au/mining2009](http://www.verticalevents.com.au/mining2009) and follow the links to 'Accommodation'.**

### Manor Apartment Hotel

The Manor Apartment Hotel (289 Queen St, Brisbane) is offering the following room rates, a One Bedroom Apartment is \$195 per room per night or a Two Bedroom Apartment is \$295 per room per night. Rates include continental breakfast served buffet-style in the Breakfast Lounge (for up to 2 persons in a one bedroom apartment or up to 4 persons in a two bedroom apartment).

**Please contact Andrew Buckley in Reservations on (07) 3319 4700 and mention you are attending the Mining 2009 Resources Convention when making your booking.**



## ORGANISER

### Vertical Events

PO Box 1153, Subiaco WA 6904

Telephone: (61 8) 9388 2222 Facsimile: (61 8) 9381 9222

Email: [info@verticalevents.com.au](mailto:info@verticalevents.com.au)

Website: [www.verticalevents.com.au/mining2009](http://www.verticalevents.com.au/mining2009)

The program is correct at the time of printing. The Organiser reserves the right to change speakers at any time without prior notice.



## SOCIAL FUNCTIONS

### Tuesday 27 October

6.30pm to 8.30pm  
Riverside Centre,  
123 Eagle Street, Brisbane

**SNOWDEN**

[www.snowdengroup.com](http://www.snowdengroup.com)

#### Snowden Welcome Reception

Snowden will once again be hosting the Mining 2009 Welcome Reception at the Riverside Centre on Tuesday 27 October.

Join industry colleagues and friends over cocktails and canapés, to view the best of Snowden's annual photography competition 'Celebrating the Mining Industry'.

Please contact Anna McKersey on [amckersey@snowdengroup.com](mailto:amckersey@snowdengroup.com) for further information and to confirm your attendance.

### Wednesday 28 October

6.30pm to 8.30pm  
Jade Buddha Shadow Lounge,  
1 Eagle Street, Brisbane

**PATERSONS**

#### Patersons Securities Cocktail Party

As a major sponsor of the Mining 2009 Resources Convention, Patersons is pleased to host the Patersons Securities Cocktail Function, incorporating the Mining 2009 Awards.

Please join us for a drink from 6.30pm to 8.30pm at the Jade Buddha Shadow Lounge to celebrate another successful year in mining.

Following the pre-function drinks in the Mining 2009 exhibition area, please make your way to the Jade Buddha, 1 Eagle Street, Brisbane.

### Thursday 29 October

5.30pm – 7.30pm

#### Mining 2009 Cocktail Party

Join us for a relaxed networking opportunity in the Exhibition Area.

### Friday 30 October

7.15am – 8.30am

Irish Club,  
175 Elizabeth Street,  
Brisbane

**QUEENSLAND  
resources  
COUNCIL**

#### Digging into Breakfast

Queensland: 2020 Greenfield Exploration Capital

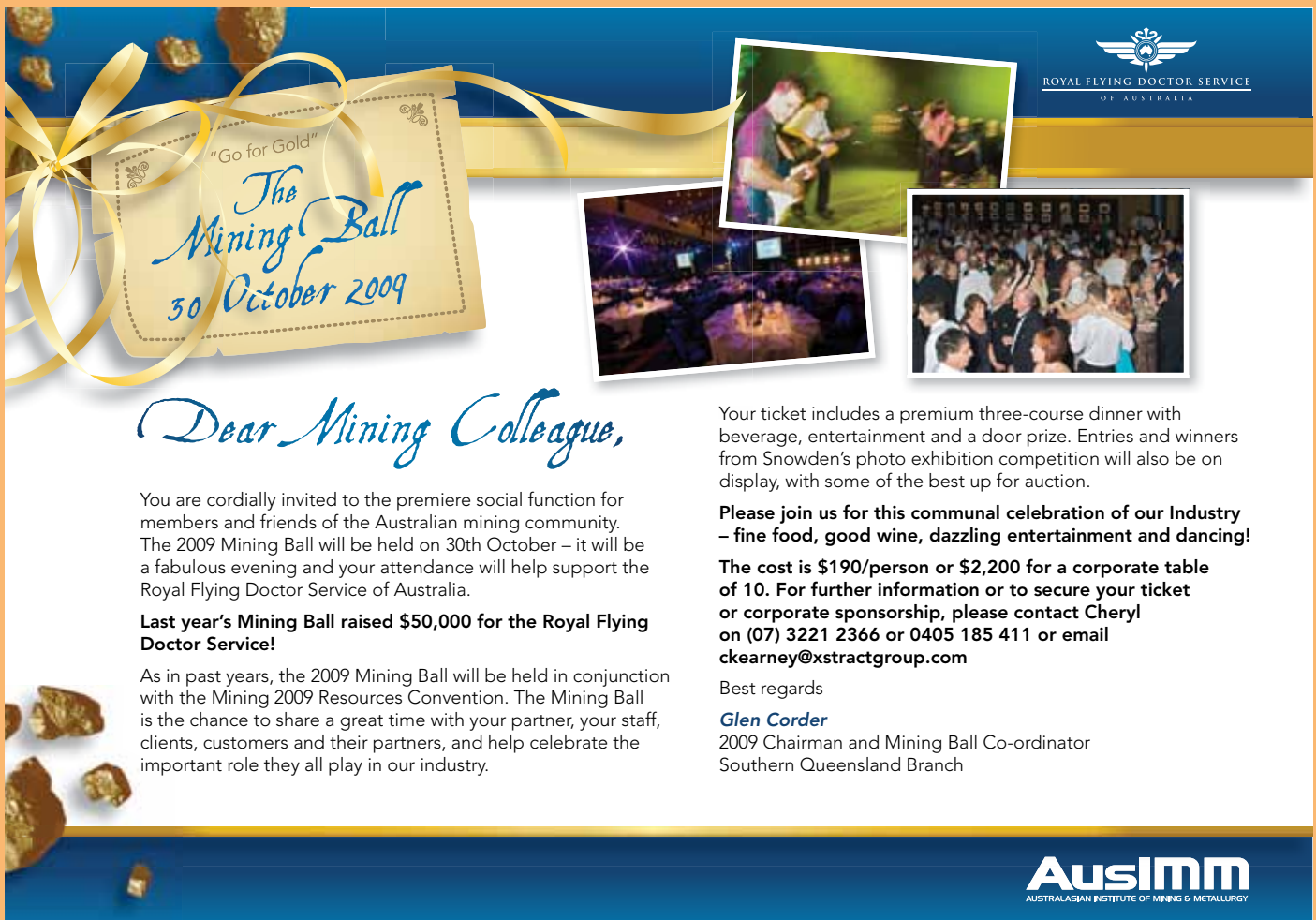
Your opportunity to hear a progress report on Queensland's campaign to become the preferred destination in Australia for minerals and energy exploration investment.

Another important resource sector event brought to you by the Queensland Resources Council.



Join us for breakfast at the Irish Club, 175 Elizabeth Street, Brisbane.

All-inclusive cost per person: \$35

Book now through QRC website ([www.qrc.org.au](http://www.qrc.org.au)) by clicking on the Events calendar.



*"Go for Gold"*  
**The Mining Ball**  
30 October 2009



**Dear Mining Colleague,**

You are cordially invited to the premiere social function for members and friends of the Australian mining community. The 2009 Mining Ball will be held on 30th October – it will be a fabulous evening and your attendance will help support the Royal Flying Doctor Service of Australia.

**Last year's Mining Ball raised \$50,000 for the Royal Flying Doctor Service!**


As in past years, the 2009 Mining Ball will be held in conjunction with the Mining 2009 Resources Convention. The Mining Ball is the chance to share a great time with your partner, your staff, clients, customers and their partners, and help celebrate the important role they all play in our industry.

Your ticket includes a premium three-course dinner with beverage, entertainment and a door prize. Entries and winners from Snowden's photo exhibition competition will also be on display, with some of the best up for auction.

**Please join us for this communal celebration of our Industry – fine food, good wine, dazzling entertainment and dancing!**

**The cost is \$190/person or \$2,200 for a corporate table of 10. For further information or to secure your ticket or corporate sponsorship, please contact Cheryl on (07) 3221 2366 or 0405 185 411 or email [ckearney@xstractgroup.com](mailto:ckearney@xstractgroup.com)**

Best regards  
**Glen Corder**  
2009 Chairman and Mining Ball Co-ordinator  
Southern Queensland Branch

**Ausimm**  
AUSTRALASIAN INSTITUTE OF MINING & METALLURGY

## Day 1 - WEDNESDAY 28 OCTOBER 2009

## AUDITORIUM 1

- 8.40am **Welcome Address**  
Stewart McDonald - Managing Director, Vertical Events
- 8.45am **Queensland Government Address**
- 9.00am **Market Update**  
Mark Simpson - Director, Head of Research  
*Patersons Securities Limited*
- 9.20am **Commodity Prices for 2010 - Back in Top-Gear or Due for a Pit-Stop?**  
Allan Trench - Regional Director  
*CRU Strategies, Australia*
- 9.40am **Energy in Australia: Recent Developments and Future Prospects**  
Paul Balfe - Executive Director  
*ACIL Tasman Pty Ltd*
- 10.00am **Slow and Steady Growth Out of China - A Better Outcome For All!**  
Stephen Bartrop - Managing Director  
*LimeStreet Capital / Stock Resource*

### 10.20am Morning Tea

- 11.00am **Exploration Initiatives in Queensland**  
Dave Mason - Executive Director, Exploration and Investment and GSQ  
*Queensland Mines and Energy*
- 11.20am **Queensland Energy Exploration Update**  
Brad John - Director, Exploration Attraction, Exploration and Investment and GSQ  
*Queensland Mines and Energy*
- 11.35am **Geoscience Australia's Onshore Energy Security Program - Progress to Date**  
James Johnson, Chief of Onshore Energy and Minerals Division  
*Geoscience Australia*
- 11.55am **The New Radiometric Map of Australia: New Insights into Australia's Uranium Prospectivity**  
Lisa Worrall, Principal Geologist, Onshore Energy and Minerals Division  
*Geoscience Australia*
- 12.10pm **Independence Group NL**  
Chris Bonwick - Managing Director

### 12.30pm Lunch

- 1.40pm **Metallica Minerals Ltd**  
Andrew Gillies - Managing Director
- 2.00pm **Southern Uranium Ltd**  
John Anderson - Managing Director
- 2.20pm **Arafura Resources Ltd**  
Gavin Lockyer - CFO / Company Secretary
- 2.40pm **Minemakers Ltd**  
Andrew Drummond - Managing Director

### 3.00pm Afternoon Tea

- 3.40pm **Orocobre Ltd**  
Richard Seville - Chief Executive Officer
- 4.10pm **Alliance Resources Ltd**  
Patrick Mutz - Managing Director
- 4.30pm **Kagara Ltd**  
Joe Treacy - Executive Director
- 4.50pm **Norton Gold Fields Ltd**  
Jon Parker - Managing Director
- 5.10pm **Carpentaria Exploration Ltd**  
Nick Sheard - Executive Chairman

### 5.30pm Conference Drinks in the Exhibition Area

- 6.30pm **Patersons Cocktail Function at the Jade Buddha Shadow Lounge**

## AUDITORIUM 2

- 1.40pm **A.I.R. Meeting the Challenge**  
Helen Sava - Queensland Division Director,  
*Association of Independent Retirees (A.I.R.) Ltd*
- 2.00pm **Clancy Exploration Ltd**  
Mark Stewart - Managing Director
- 2.20pm **Syndicated Metals Ltd**  
Russell Davis - Managing Director
- 2.40pm **Mt Isa Metals Ltd**  
Andrew Bowden - General Manager, Exploration

### 3.00pm Afternoon Tea

- 3.40pm **Kentor Gold Ltd**  
Simon Milroy - Managing Director
- 4.10pm **Southern Cross Goldfields Ltd**  
Antony Truelove - Managing Director
- 4.30pm **Meridian Minerals Ltd**  
Jeremy Read - Managing Director
- 4.50pm **Liberty Resources Ltd**  
Andrew Haythorpe - Managing Director
- 5.10pm **Cougar Energy Ltd**  
Dr Len Walker - Managing Director

### 5.30pm Conference Drinks in the Exhibition Area

- 6.30pm **Patersons Cocktail Function at the Jade Buddha Shadow Lounge**



**Day 2 - THURSDAY 29 OCTOBER, 2009**

**AUDITORIUM 1**

- 8.45am **D'Aguilar Gold Ltd**  
Nicholas Mather - Managing Director
- 9.05am **Toro Energy Ltd**  
Greg Hall - Managing Director
- 9.25am **Gold & Base Metal Discovery Opportunities - Victoria, Australia**  
Paul McDonald - Manager Resources,  
*GeoScience Victoria*
- 9.35am **New Frontiers in NSW**  
Cameron Ricketts - Manager - Minerals & Land Use Assessment,  
*NSW Geological Survey, DPI - Mineral Resources Division*
- 9.45am **PanAust Ltd**  
Dr Fred Hess - Executive GM - SE Asia
- 10.05am **Highlands Pacific Group**  
Craig Lennon - Chief Financial Officer

**10.25am Morning Tea**

- 10.55am **Territory Resources Ltd**  
Andy Haslam - Managing Director
- 11.15am **Western Areas NL**  
Charles Wilkinson - General Manager, Exploration
- 11.35am **Western Australia - More Land, More Commodities, More Exploration Opportunities**  
Dr Tim Griffin - Executive Director  
*Geological Survey of Western Australia*
- 11.45am **Reed Resources Ltd**  
Christopher Reed - Managing Director
- 12.05pm **Cape Alumina Ltd**  
Paul Messenger - CEO
- 12.25pm **Amadeus Energy Ltd**  
Mitchell Wells - Chief Operating Officer

**12.45pm Lunch**

- 1.40pm **Heemskirk Consolidated Ltd**  
Peter Bird - Executive Director
- 2.00pm **Emerging Greenfields Provinces and New Discoveries in the Northern Territory**  
Ian Scrimgeour - Director,  
*NT Geological Survey*
- 2.10pm **16 Mines in 2010: SA's Growing Mining Sector**  
Dr Ted Tyne - Director, Minerals Resources Group,  
Primary Industries and Resources SA,  
*Government of South Australia*
- 2.20pm **Heron Resources Ltd**  
Mathew Longworth - Managing Director
- 2.40pm **Rex Minerals Ltd**  
Steve Olsen - Managing Director
- 3.00pm **Manhattan Corporation Ltd**  
Alan J Eggers - Executive Chairman

**3.20pm Afternoon Tea**

- 3.50pm **BC Iron Ltd**  
Mike Young - Managing Director
- 4.10pm **Catalpa Resources Ltd**  
Bruce McFadzean - Managing Director
- 4.30pm **Silver Lake Resources Ltd**  
Les Davis - Managing Director
- 4.50pm **Ivanhoe Australia Ltd**  
Peter Reeve - Managing Director & CEO
- 5.10pm **Cape Lambert Iron Ore Ltd**  
Tony Sage - Executive Chairman

**5.30pm Mining 2009 Cocktail Function held in the exhibition area**

**AUDITORIUM 2**

- 8.45am **PepinNini Minerals Ltd**  
Norman Kennedy - Managing Director
- 9.05am **Silver Swan Group Ltd**  
Dr Susan Vearncombe - Managing Director
- 9.25am **Chesser Resources Ltd**  
Rick Valenta - Managing Director
- 9.45am **Azumah Resources Ltd**  
Stephen Stone - Executive Chairman
- 10.05am **Exco Resources Ltd**  
Geoff Laing - Corporation & Project Development Manager

**10.25am Morning Tea**

- 10.55am **Ampella Mining Ltd**  
Dr Paul Kitto - Managing Director & CEO
- 11.15am **Emmerson Resources Ltd**  
Rob Bills - Managing Director & CEO
- 11.35am **Opal Horizon Ltd**  
David Horton - Managing Director
- 11.45am **Minotaur Exploration Ltd**  
Dr Tony Belperio - Exploration Director
- 12.05pm **Activex Ltd**  
Doug Young - Managing Director
- 12.25pm **Universal Resources Ltd**  
Peter Ingram - Managing Director

**12.45pm Lunch**

- 1.40pm **A1 Minerals Ltd**  
John Williams - Managing Director
- 2.00pm **Republic Gold Ltd**  
John Kelly - Managing Director
- 2.20pm **Northern Energy Corporation Ltd**  
Keith Barker - Managing Director
- 2.40pm **Anchor Resources Ltd**  
Trevor Woolfe - Managing Director
- 3.00pm **Barra Resources Ltd**  
Dean Goodwin - Managing Director

**3.20pm Afternoon Tea**

- 3.50pm **Superior Resources Ltd**  
Ken Harvey - Managing Director
- 4.10pm **China Yunnan Copper Australia Ltd**  
Richard Hatcher - Exploration Manager
- 4.30pm **First Australian Resources Ltd**  
Michael Evans - Chairman
- 4.50pm **Gunson Resources Ltd**  
David Harley - Managing Director
- 5.10pm **Drake Resources Ltd**  
Dr Bob Beeson - Managing Director

**5.30pm Mining 2009 Cocktail Function held in the Exhibition Area**



**DAY 3 - FRIDAY 30 OCTOBER, 2009**

**AUDITORIUM 1**

- 8.50am **Citigold Corporation Ltd**  
Chris Towsey - Chief Operating Officer
- 9.10am **Wolf Minerals Ltd**  
Humphrey Hale - Managing Director
- 9.30am **Avalon Minerals Ltd**  
David McSweeney - Managing Director
- 9.50am **Image Resources NL**  
George Sakalidis - Managing Director
- 10.10am **Breakaway Resources Ltd**  
David Hutton - Chief Executive Officer
- 10.30am **Morning Tea**
- 11.00am **Laramide Resources Ltd**  
Robert Sowerby - Project Manager
- 11.20am **Diatreme Resources Ltd**  
Tony Fawdon - Executive Chairman / CEO
- 11.40am **Deep Yellow Ltd**  
Dr Leon Pretorius - Managing Director
- 12.00pm **Krucible Metals Ltd**  
Tony Alston - Managing Director
- 12.20pm **Sirius Resources NL**  
Dr Mark Bennett - Managing Director
- 12.40pm **Lunch**
- 1.30pm **Integra Mining Ltd**  
Chris Cairns - Managing Director
- 1.50pm **Mincor Resources NL**  
David Moore - Managing Director
- 2.10pm **Citadel Resource Group**  
Jeff Sells - Chief Financial Officer
- 2.30pm **Lihir Gold Ltd**  
Peter Smith - Executive General Manager Operations,  
Australia and West Africa
- 2.50pm **Conference Close**



**AUDITORIUM 2**

**Current and Emerging Factors in Exploration and Mining**



The Southern Queensland Branch of the Australasian Institute of Mining and Metallurgy (SQ AusIMM) in conjunction with the Queensland Resources Council (QRC) is organising a half-day forum focused on important and emerging factors for exploration and mining in Queensland. The forum will be held on the final day (30 October) of the Mining 2009 Resources Convention in Brisbane.

The forum, which will immediately follow the QRC breakfast, will comprise two morning sessions. In the first morning session, presentations will cover strategic and policy issues related to exploration and mining within a Queensland context. In the second morning session, presentations will focus on the current and emerging technologies and expertise to aid exploration and mining. The forum will conclude at lunchtime.

Attendees of the forum will also have the opportunity to attend the SQ AusIMM Branch's premier social event of the year, the Mining Ball, on the evening of 30 October.

- 8.50am **Transforming Resources into Reserves - Opportunities and Risks**  
Mark Berry - Principal Geologist  
**AMC Consultants Pty Ltd**
- 9.15am **"The Data Gap - Maker and Destroyer of Orebodies: Just When You Thought You Were JORC Table 1 Compliant..."**  
Dr Bill Laing - Principal Consultant  
**Laing Exploration Pty Ltd**
- 9.40am **New Mining Technologies - What Impact and When?**  
Professor Paul J.A. Lever  
CRC Mining Chair and Professor of Mining Engineering,  
School of Engineering  
**University of Queensland**
- 10.05am **The Community Dimensions of Exploration: An Unwelcome Guest?**  
Dr Daniel Franks  
Research Fellow from Centre for Social Responsibility  
**University of Queensland**
- 10.30am **Morning Tea**
- 11.00am **Coal Seam Gas - Development of a Major Energy Source in Eastern Australia**  
Grahame Baker - Senior Advisor  
**RLMS**
- 11.25am **Impact of CPRS on Australian Coal Industry**  
Bede Boyle - Founder  
**AustCoal Consulting Alliance**
- 11.50am **Queensland's Carbon Geostorage Initiative**  
John Draper - Director, Carbon Geostorage Initiative,  
Exploration and Investment and GSQ  
**Queensland Mines and Energy**
- 12.15pm **New Coal Technologies and their Application in Australia**  
Frank Van Schagen  
Manager Coal Chemical Technologies  
**Monadelphous Group Ltd**
- 12.40pm **Auditorium Close**





## MEDIA

Some of the leading resource / finance journalists from around Australia are being flown in for the Mining 2009 Resources Convention, further demonstrating that this event has become one of the leading resource investment conferences in Australia.

Media Sponsor



All Media enquires should be directed to David Tasker, PPR WA on 08 9388 0944.



## AWARDS FOR 2009

The Mining 2009 Resources Convention will again present:

- the 2009 QLD Explorer of the Year
- the 2009 QLD Miner of the Year

Both awards will be presented in recognition of excellence in the state's minerals sector and the outstanding contribution it is making towards Queensland's powerhouse economic growth.

The awards will be officially presented at the Patersons Securities Cocktail Party on Wednesday 28 October at the Jade Buddha Shadow Lounge. Winners will be decided by a team of experts and previewed in the October edition of the Gold & Minerals Gazette (an RIU publication).

## DATA GAP WORKSHOP

Laing Exploration Pty Ltd and the Mining 2009 Resources Convention offer delegates a one day Workshop which rolls out the Data Gap in its international premiere.

Delegates are familiar with the spatial data gap in resource testing, in which the spacing of drilling is closed sufficiently to ensure representative sampling of the mineralised structures. The directly equivalent vector data gap (Data Gap for simplicity) is the angular "spacing" between drilling array and the (generally multiple) mineralised structures. Until the latest JORC Code the vector Data Gap has been ignored in our regulatory codes, and at best treated simplistically in our resource modelling.

The Data Gap is a Pandora's box of issues, and it has, and can, render major resources useless - before and after mining startup. The Workshop comprehensively examines the Data Gap, its recognition, and its remediation for all deposit types, with numerous case studies including Olympic Dam and Prominent Hill. The Workshop offers solutions that include a suite of drilling design recipes for every deposit type, structural database remediation, and how to resuscitate projects infected by a large Data Gap in previous testing.

Two one-day Workshops are planned, bracketing the Convention on Tuesday 27 October and Saturday 31 October. The Workshops will be conducted by Dr Bill Laing who has developed the concept and international protocols of the Data Gap.

For more information please visit

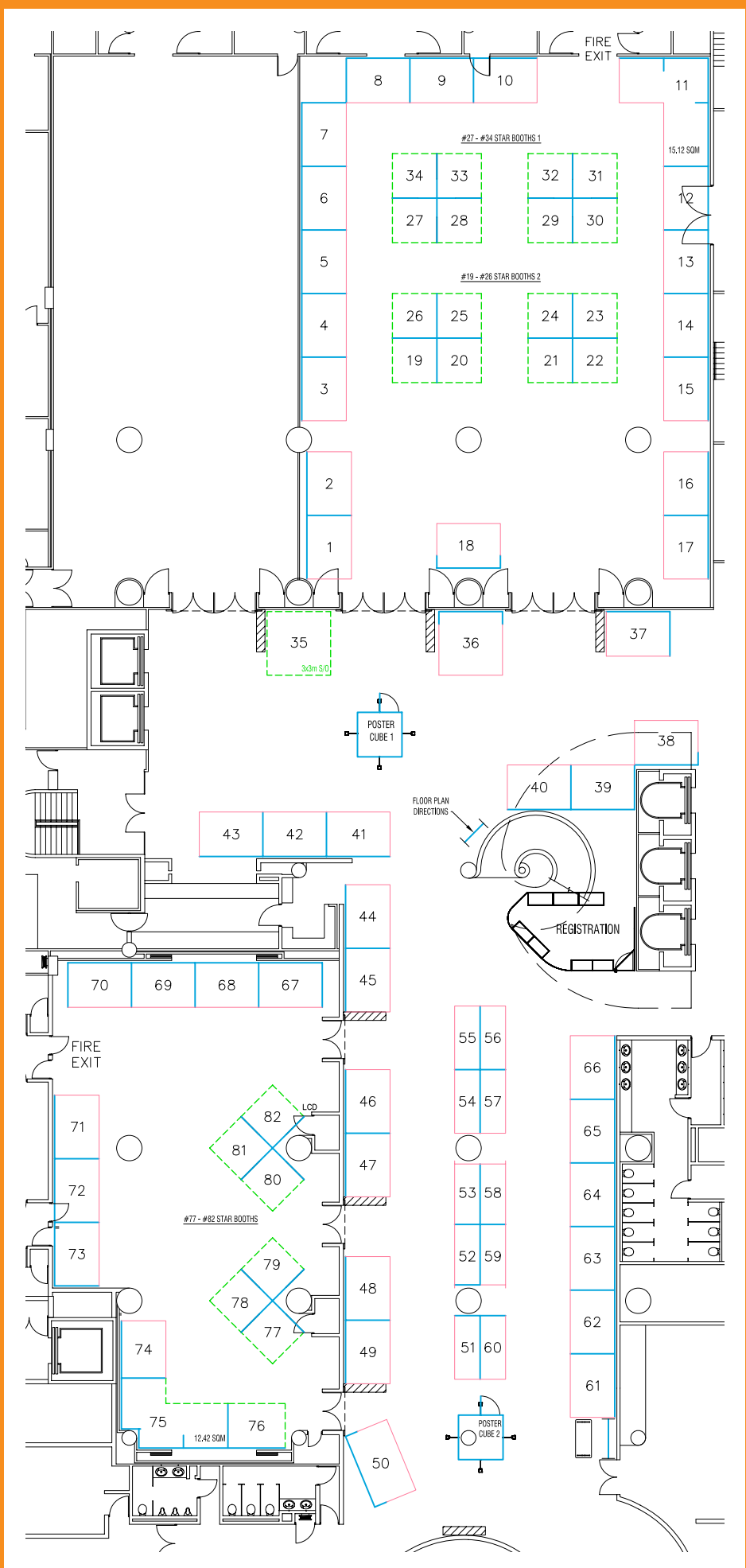
[www.laingex.com](http://www.laingex.com)

or contact Bill Laing at [manager@laingex.com](mailto:manager@laingex.com) or by telephone (61 7) 4789 1401



# EXHIBITOR LISTING - ALPHABETICAL

A1 Minerals Ltd	76
Activex Ltd	12
Alliance Resources Ltd	13
ALS Laboratory Group	47
Amadeus Energy Ltd	5
Ampella Mining Ltd	27
Anchor Resources Ltd	68
Arafura Resources Ltd	16 & 17
Ausenco	45
Barra Resources Ltd	51
BC Iron Ltd	4
Breakaway Resources Ltd	18
Cape Alumina Ltd	8
Cape Lambert Iron Ore Ltd	1
Carpentaria Exploration Ltd	37
Catalpa Resources Ltd	81
Chesser Resources Ltd	29
Clancy Exploration Ltd	80
Coffey Mining	57
Copper Strike Ltd	73
CRU	58
D'Aguilar Gold Ltd	3
Diatreme Resources Ltd	11
Drake Resources Ltd	31
Exco Resources Ltd	56
Fugro Airborne Surveys Pty Ltd	60
Genalysis Intertek	72
Geological Survey of Western Australia	22
Geoscience Australia	25 & 26
GeoScience Victoria	23
Golder Associates	42
GRD Minproc	77
Highlands Pacific Group	6
HRL Testing Pty Ltd	54
IMC Mining Solutions	48
Impact Minerals Ltd	34
Innov-X Systems Australia Pty Ltd	41
Integra Mining Ltd	70
Intierra	50
ioGlobal	55
Ivanhoe Australia Ltd	66
Japan Oil, Gas and Metals National Corporation (JOGMEC)	43
Kagara Ltd	71
Kentor Gold Ltd	49
Krucible Metals Ltd	38
Liberty Resources Ltd	32
LimeStreet Capital / Stock Resource	67
Manhattan Corporation Ltd	53
Marmota Energy Ltd	61
McCullough Robertson	75
Meridian Minerals Ltd	10
Metallica Minerals Ltd	7
Micromine	74
Mincor Resources NL	15
Minemakers Ltd	64
Mining Associates	82
Mining People International	PC2
Mt Isa Metals Ltd	9
Northern Territory Government	20
Norton Gold Fields Ltd	33
NSW Department of Primary Industries	24
Orocobre Ltd	52
PanAust Ltd	14
Patersons Securities Ltd	35
PIRSA	19
Queensland Mines and Energy	21, 36 & PC1
Republic Gold Ltd	79
Resource & Exploration Mapping Pty Ltd	63
Rex Minerals Ltd	59
RSV Australia Pty Ltd	46
SGS Australia	65
Silver Lake Resources Ltd	40
Sirius Resources NL	28
Snowden	44
Southern Cross Goldfields Ltd	30
Southern Uranium Ltd	2
Superior Resources Ltd	11
Syndicated Metals Ltd	78
Terra Search Pty Ltd	69
Universal Resources Ltd	62
Western Areas NL	39



# M1 MINING 2009

28 - 30 OCTOBER, 2009  
HILTON BRISBANE - AUSTRALIA

## DELEGATE REGISTRATION

Please complete this form and remit together with your payment to the address at the bottom of the page. A separate form must be completed for each delegate (photocopies are acceptable). Registrations will not be processed without full payment.

### CONTACT INFORMATION

Title / First Name: \_\_\_\_\_ Surname: \_\_\_\_\_

Job Title: \_\_\_\_\_

Organisation: \_\_\_\_\_

Address: \_\_\_\_\_

City / State / Postcode: \_\_\_\_\_ Country: \_\_\_\_\_

Telephone: \_\_\_\_\_ Facsimile: \_\_\_\_\_

Email: \_\_\_\_\_

A TAX INVOICE AND CONFIRMATION OF ATTENDANCE WILL BE FAXED TO YOU. ABN: 86 083 623 358

### CONFERENCE REGISTRATION

- |                          |  |                              |
|--------------------------|--|------------------------------|
| <input type="checkbox"/> | Early Bird Registration (before 4 September, 2009) | \$ 990.00 (inclusive of GST) |
| <input type="checkbox"/> | Standard Registration (after 4 September, 2009)    | \$1100.00 (inclusive of GST) |
| <input type="checkbox"/> | The Mining Ball 2009                               | \$ 190.00 (inclusive of GST) |

### PAYMENT OPTIONS

Payment must be received within seven (7) days of verbal reservation. Please return this application to PO Box 1153, Subiaco WA 6904, Australia or alternatively fax to (61 8) 9381 9222. **If paying by cheque, please make payable to Mining 2000 Pty Ltd.**

\*Please note a 4% surcharge will be added to all American Express and Diners Charges.

Visa Card     Master Card     American Express\*     Diners Card\*

Card Number: \_\_\_\_\_

Card Expiry Date: \_\_\_\_\_ Total to be paid: \_\_\_\_\_

Cardholder's Name: \_\_\_\_\_ Cardholder's Signature: \_\_\_\_\_

### AUTHORISATION

Authorisation of this form is a binding contract – including non-arrivals to the event. Please refer to the cancellation policy below.

Name: \_\_\_\_\_

Position: \_\_\_\_\_ Signature: \_\_\_\_\_

### CANCELLATION POLICY

Cancellation Policy: All cancellations must be made in writing to Vertical Events. No refunds will be made after 9 October, 2009. All refunds prior to 9 October, 2009 will incur an administration charge.

**MINING 2000 PTY LTD** ABN: 86 083 623 358

PO Box 1153, Subiaco WA 6904 - Suite 15, 186 Hay Street, Subiaco WA 6008

T: (08) 9388 2222 F: (08) 9381 9222 E: info@verticalevents.com.au W: www.verticalevents.com.au





AUSTRALIA'S ONLY  
INTEGRATED MINING  
AND ENERGY  
INVESTMENT FORUM



**MINING 2000 PTY LTD** ABN: 86 083 623 358  
PO Box 1153, Subiaco WA 6904 - Suite 15, 186 Hay Street, Subiaco WA 6008  
T: (08) 9388 2222 F: (08) 9381 9222 E: [info@verticalevents.com.au](mailto:info@verticalevents.com.au) W: [www.verticalevents.com.au](http://www.verticalevents.com.au)

